

CM-310EE

Exit Switch & Integrated Timer (Ver. 2)

INSTALLATION INSTRUCTIONS

1. GENERAL DESCRIPTION

Camden model CM-310EE is an illuminated Exit switch incorporating a 30 second timer. The stainless steel faceplate is designed to flush mount on to a 1 3/4" wide doorjamb.

The 1/2" x 3/4" rectangular translucent button is easy to push. CM-310EE model is supplied with a LED light bulb, which is accessed through the front of the switch. If the unit is powered 24VDC, the supplied in-line resistors must not be removed.

This switch has been designed specifically to release a magnetic lock from the inside, as per the BOCA code. When the button is pushed and released, the lock will release for 30 seconds. Re-trigger is possible at any time.

The "double break" circuitry has been designed so that even if the timer fails, depressing the switch will interrupt power to the magnetic lock.



CM-310EE

2. SPECIFICATIONS

| Models | CM-300 |
|------------------------|---|
| Operating Voltage | 12 or 24 V DC |
| Time Delay | 30 seconds |
| Contact Rating | 4 amps @ 30 VDC |
| Incandescent Bulb Life | 15,000hrs.@ rated capacity |
| Mounting | 2 x #6-32 machine screws |
| Lens Colour | Green |
| Legend | 'PUSH TO EXIT' |
| Dimension | 2.75" W x 4.5" H x 1 5/16" (70mm x 114mm x 33mm) |

3. INSTALLATION

Mounting

The unit is completely pre-wired for easy installation. Connect the appropriate wires to your devices as per the enclosed wiring diagram. Tuck wiring into box (retrofit box included), and fasten switch plate using screws provided.

Wiring

Six color coded leads are provided. This unit will operate on 12 or 24 VDC, with no jumper change required. For convenience it may be powered by the same power that supplies the magnetic lock. The two pairs of **Red & Black** wires connect to 12 or 24 VDC.

One pair supplies power to the timer, and the other pair powers the light. The internal timer and the push button are connected in series with the **Green & White** wires. This is how the "double break" feature works. Therefore, the unit must be wired as shown.

The **Green** wire goes to the positive input wire of the magnetic lock, and the **White** wire goes to a source of + Voltage. Please refer to the enclosed wiring diagram for typical hook-up.

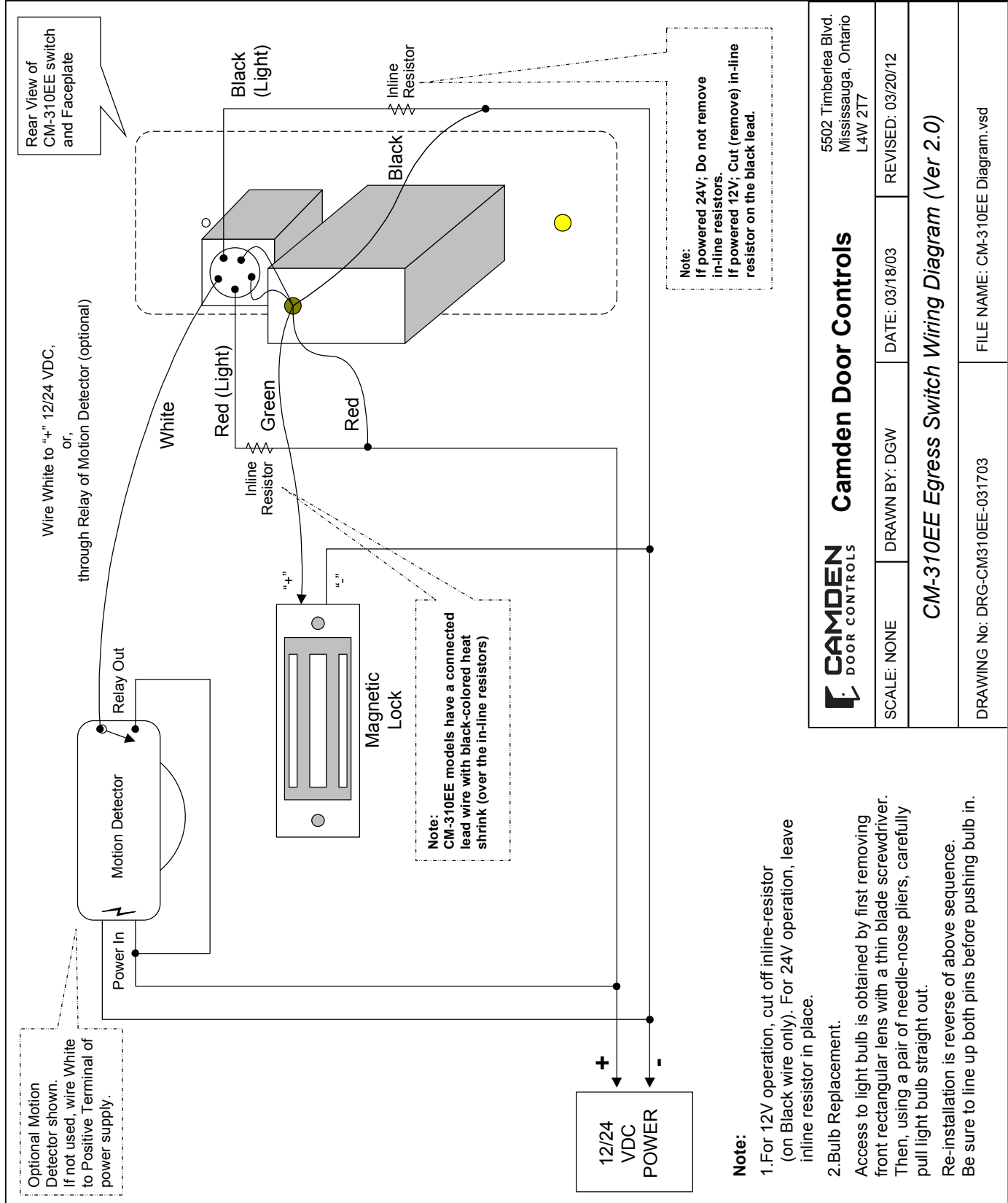
Important:

CM-310EE models have connected lead wires with black-colored heat shrink (over an in-line resistors).

If powered 24V; Do not remove in-line resistors. If powered 12V; Cut (remove) in-line resistor on the black lead.

4. LIMITED WARRANTY

Camden Door Controls Inc. warrants this product to be free from defects for 3 years from date of manufacturing. Visit our web site at www.camdencontrols.com to see our complete warranty policy, including limitations and the procedures for product returns.



Note:

1. For 12V operation, cut off in-line-resistor (on Black wire only). For 24V operation, leave in-line resistor in place.
2. Bulb Replacement:
 Access to light bulb is obtained by first removing front rectangular lens with a thin blade screwdriver. Then, using a pair of needle-nose pliers, carefully pull light bulb straight out.
 Re-installation is reverse of above sequence. Be sure to line up both pins before pushing bulb in.