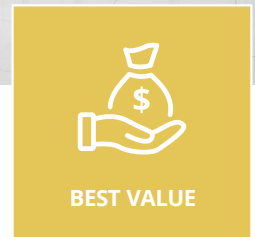


CX-ED1079 Series 'Universal' Low & Standard Profile Electric Strikes

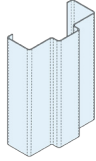
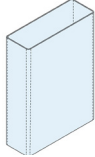
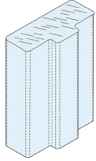


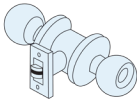
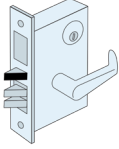
Camden CX-ED1079 Series low profile, for 5/8" latch projection) and CX-ED1079D (standard depth, for 3/4" latch projection) 'Universal' grade 1 ANSI strikes offer 'universal' performance with selectable 12/24V AC/DC and fail safe/fail secure operation, and have horizontal faceplate/body adjustment.

Features

- Compatible with centerline cylindrical and mortise locksets
- Adjustable Strike Body
- 3 Stainless steel faceplates included
- Non-handed
- Easy fit connectors for power & monitoring wires
- Trim plate approved
- 5 year warranty



DOOR FRAME TYPES		
Hollow Metal Frame	Aluminum Frame	Wood Frame
		

COMPATIBLE LOCKSETS	
Cylindrical Lockset	Mortise Locks
	

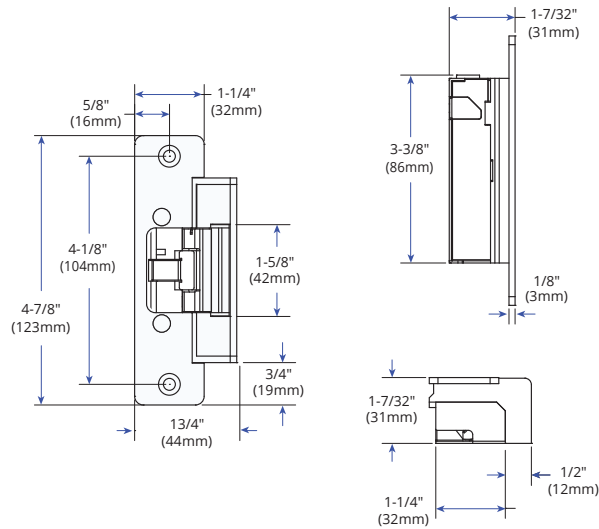
SPECIFICATIONS			
VOLTAGE:	12/24V AC/DC	LATCH MONITOR:	Latch Bolt
CURRENT DRAW:	260mA @ 12V AC/DC 150mA @ 24V AC/DC	MODE:	Field selectable fail safe/fail secure
STATIC HOLD FORCE:	1,500 Lbs.	OPERATION:	AC - Buzz, DC - Silent
DYNAMIC STRENGTH:	70 Ft-Lbs.	DUTY:	Continuous
ENDURANCE:	1,000,000 Cycles (Factory Tested) 250,000 Cycles (UL Verified)	DIMENSIONS (BODY):	CX-ED1079: 3-3/8" L x 1-3/4" W x 1-7/32" D (86mm x 44mm x 31mm) CX-ED1079D: 3-3/8" L x 1-3/4" W x 1-3/8" D (86mm x 44mm x 35mm)
MECHANICAL ADJUSTMENT:	Strike body		

ORDERING INFORMATION	
MODEL	
CX-ED1079	Low Profile Grade 1 'Universal' electric strike, 12/24V AC/DC, fail safe/fail secure operation, horizontal adjustment, and 3 stainless steel faceplates (CX-ESP1B, CX-ESP3B & CX-ESP4B)
CX-ED1079L	As above, with latch monitoring
CX-ED1079D	Standard Depth Grade 1 'Universal' electric strike, 12/24V AC/DC, fail safe/fail secure operation, horizontal adjustment, and 3 stainless steel faceplates (CX-ESP1B, CX-ESP3B & CX-ESP4B)
CX-ED1079DL	As above, with latch monitoring

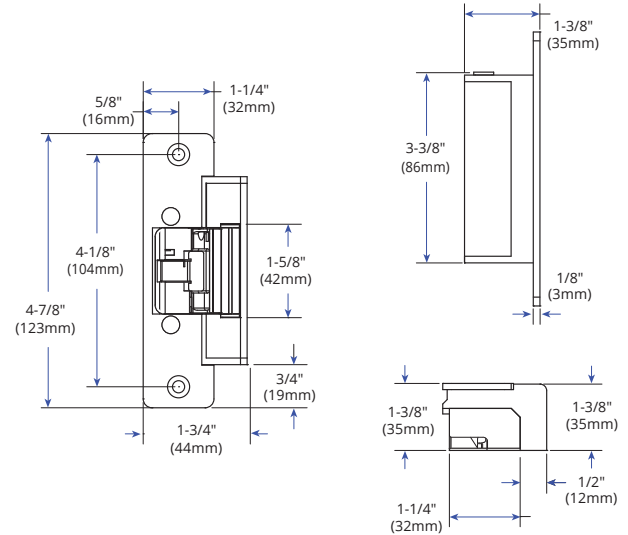
ORDERING INFORMATION	
INCLUDED IN PACKAGE	
CX-ESP1B	'ANSI' Square, 4-7/8" x 1-1/4", stainless steel
CX-ESP3B	Hollow Metal Door, 6-7/8" x 1-1/4", stainless steel
CX-ESP4B	Wood Door, 7-15/16" x 1-7/16", stainless steel
OPTIONAL FACEPLATES	
CX-ESP2B	ANSI Round, 4-7/8" x 1-1/4", stainless steel
CX-ESP1B-BK	ANSI Square, 4-7/8" x 1-1/4", all-black finish (BHMA 622, US19)
CX-ESP2B-BK	ANSI Round, 4-7/8" x 1-1/4", all-black finish (BHMA 622, US19)
CX-ESP3B-BK	Hollow Metal Door, 6-7/8" x 1-1/4", all-black finish (BHMA 622, US19)
CX-ESP4B-BK	Wood Door, 7-15/16" x 1-7/16", all-black finish (BHMA 622, US19)

DIMENSIONS

CX-ED1079



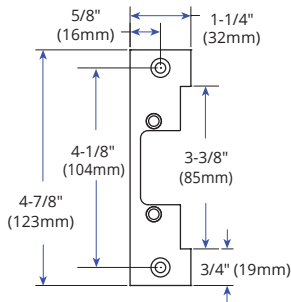
CX-ED1079D



FACEPLATE DIMENSIONS

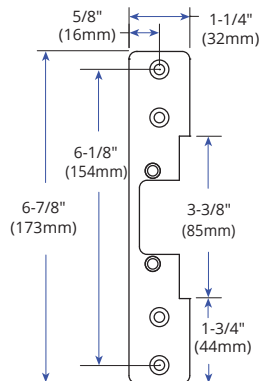
INCLUDED IN PACKAGE

'ANSI' Square



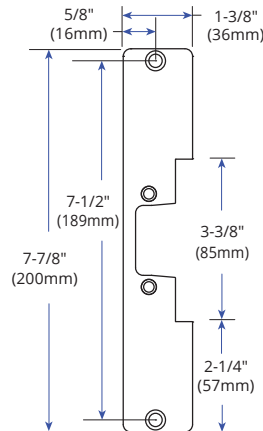
CX-ESP1B

Hollow Metal Door



CX-ESP3B

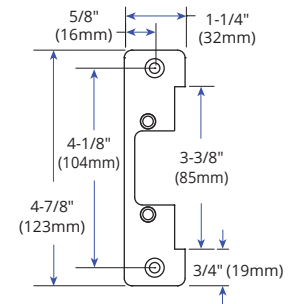
Wood Door



CX-ESP4B

OPTIONAL FACEPLATE

'ANSI' Round



CX-ESP2B

CUTTING JIGS

CX-JIG1	For CX-ED1079L Strike, ANSI Round faceplate (CX-ESP2B)
CX-JIG2	For CX-ED1079L Strike, Hollow metal door faceplate (CX-ESP3B)
CX-JIG3	For CX-ED1079DL Strike, ANSI Round faceplate (CX-ESP2B)
CX-JIG4	For CX-ED1079DL Strikes, Hollow metal door faceplate (CX-ESP3B)
CX-JIG5	For CX-ED1079L/DL Strikes, 'ANSI' & hollow metal door faceplates

LIP EXTENSION BRACKETS

CX-ED-LIP1	1" Lip extension for 'ANSI' strikes (stackable)
CX-ED-LIP2	2" Lip extension for 'ANSI' strikes



Opening New Doors to Innovation, Quality, and Support!

2395 Skymark Ave, Mississauga, ON Canada L4W 4Y6 • Toll Free: 1(877) 226-3369 (CAMDEN9)
Tel: (905) 366-3377 | Fax: (905) 366-3378 | E-mail: info@camdencontrols.com | www.camdencontrols.com



Part #: MKTG-LIT-SP-CX-ED1079