

CM-30AT

Exit Switch & Integrated Variable Timer

INSTALLATION INSTRUCTIONS

1. GENERAL DESCRIPTION

Camden model CM-30AT is an illuminated Exit switch incorporating a 1 - 30 second variable timer. The stainless steel faceplate is designed to mount into a 2 1/2" deep single gang electrical box, included.

The large 2" translucent button is easy to push. CM-30AT model is supplied with a 12V DC long-life LED. If the unit is powered 24VDC, the supplied in-line resistor must not be removed.

This switch has been designed specifically to release a magnetic lock or an electric strike from the inside.

When the button is pushed and released, the lock will release from 1-30 seconds. Re-trigger is possible at any time.

2. SPECIFICATIONS

Lens Color	Green Lens
Legend	Push to Exit
Mounting	2 x #6-32 machine or tamper screws supplied
Operating Voltage	12/24 VDC
Time Delay	1 - 30 seconds
Output	Form 'C' SPDT dry contacts
Contact Rating	10 Amps @ 30 VDC
Size	4-1/2" H x 2-3/4" W x 2-1/2" D 114.3mm x 69.9mm x 63.5mm

Important

If powered 24V; Do not remove in-line resistor.

If powered 12V; Cut (remove) in-line resistor.

3. INSTALLATION

Mounting

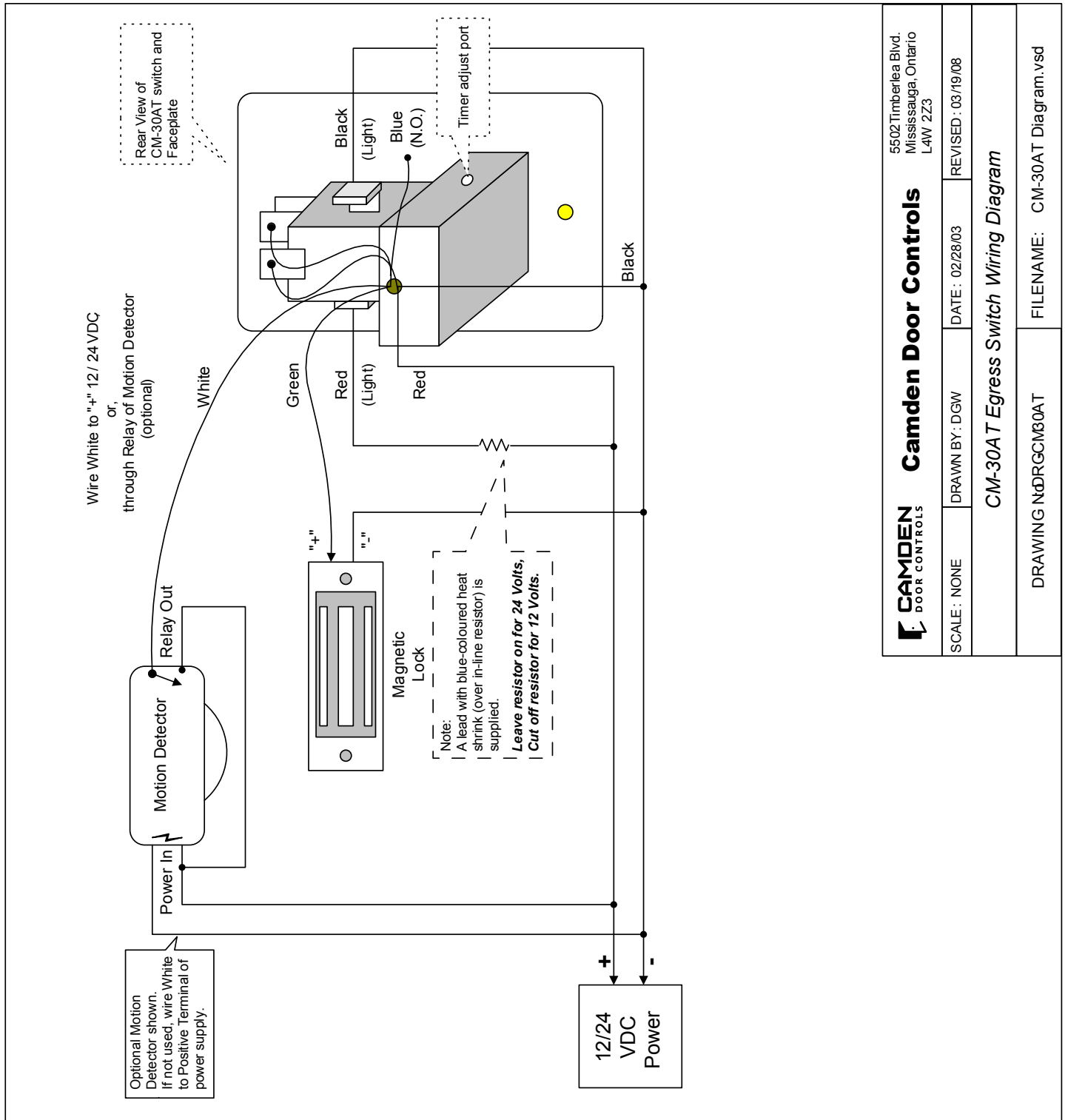
The unit is completely pre-wired for easy installation. Connect the appropriate wire to your devices as per the enclosed wiring diagram. Tuck wiring into box (retrofit box included), and fasten switch plate using standard or tamper screws provided.


Wiring

Seven color coded leads are provided. This unit will operate on 12 or 24 VDC, with no jumper change required. For convenience it may be powered by the same power that supplies the magnetic lock or the electric strike. The two pairs of Red & Black wires connect to 12 or 24 VDC. One pair supplies power to the timer, and the other pair powers the LED light.

4. WARRANTY

Camden Door Controls Inc. warrants this product to be free from defects for 3 years from date of manufacturing. Visit our web site at www.camdencontrols.com to see our complete warranty policy, including limitations and the procedures for product returns.



 CAMDEN DOOR CONTROLS		Camden Door Controls		5502 Timberlea Blvd. Mississauga, Ontario L4W 2Z3	
SCALE: NONE	DRAWN BY: DGW	DATE: 02/28/03	REVISED: 03/19/08		
CM-30A T Egress Switch Wiring Diagram					
DRAWING NtdRGCW30AT			FILENAME: CM-30AT Diagram.vsd		